

The local quantum critical point and non-Fermi liquid properties

This article has been downloaded from IOPscience. Please scroll down to see the full text article.

2003 J. Phys.: Condens. Matter 15 S2207

(<http://iopscience.iop.org/0953-8984/15/28/353>)

View [the table of contents for this issue](#), or go to the [journal homepage](#) for more

Download details:

IP Address: 171.66.16.121

The article was downloaded on 19/05/2010 at 14:17

Please note that [terms and conditions apply](#).

The local quantum critical point and non-Fermi liquid properties

Qimiao Si

Department of Physics and Astronomy, Rice University, Houston, TX 77005–1892, USA

Received 12 November 2002

Published 4 July 2003

Online at stacks.iop.org/JPhysCM/15/S2207

Abstract

Quantum criticality provides a means to understand the apparent non-Fermi liquid phenomena in correlated electron systems. How to properly describe quantum critical points (QCPs) in electronic systems has however been poorly understood. The issues have become particularly well defined due to recent experiments on heavy-fermion metals, in which QCPs have been explicitly identified. In this paper, I summarize some recent theoretical work on the subject, with an emphasis on the notion of ‘local quantum criticality’. I describe the microscopic work based on an extended dynamical mean-field theory, as well as Ginzburg–Landau arguments for the robustness of the local QCP beyond the microscopics. I also present the consequences of this picture for inelastic neutron scattering, NMR, Fermi surface properties, and the Hall coefficient, and compare them with the available experiments. Some analogies with the Mott transition phenomena are also noted.

1. Introduction

One basic issue for correlated electron systems concerns how electron–electron interactions lead to non-Fermi liquid behaviour. Proximity to a quantum critical point (QCP) provides one mechanism. Fermi liquid theory for spatial dimensions higher than one is internally consistent when the electron–electron interactions are treated perturbatively. At a QCP, however, the effective interactions can become very strong due to quantum critical fluctuations, opening the door to a non-Fermi liquid critical state.

Quantum critical metals are of general interest in a variety of strongly correlated electron systems, possibly also for high-temperature superconductors [1]. The issues are however particularly well defined for heavy-fermion metals, for the simple reason that QCPs have been explicitly identified. Here, the transitions are typically between a paramagnetic metal and an antiferromagnetic metal. For instance, $\text{CeCu}_{6-y}\text{Au}_y$ becomes magnetic when the Au doping reaches $y_c \approx 0.1$ [2], stoichiometric YbRh_2Si_2 is fortuitously sited ($T_N \approx 70$ mK) close to its QCP [3], and in the cases of CePd_2Si_2 and CeIn_3 the Néel temperature can be suppressed by applying pressure [4]. In the quantum critical regime, these materials do indeed show

non-Fermi liquid properties. The electrical resistivity is linear (or close to being linear) in T , for as extended a temperature range as three decades [5]. The specific heat coefficient is either singular—so the effective mass diverges in the $T = 0$ limit—or is finite but contains a non-analytic dependence on temperature. There is no doubt that such non-Fermi liquid behaviour originates from quantum critical physics, as Fermi liquid properties (constant specific heat coefficient and/or T^2 -resistivity) are recovered at low temperatures when the system is tuned away from the QCP [2, 6–8].

Some direct clues to the nature of such metallic QCPs have come from the inelastic neutron scattering experiments of Schröder *et al* [9, 10]. The frequency and temperature dependences of the dynamical spin susceptibility are characterized by an anomalous exponent $\alpha < 1$ as well as ω/T scaling. In addition, the same anomalous exponent α is seen essentially everywhere in the Brillouin zone. These experimental results differ in a very basic fashion from the standard Hertz–Millis picture, which argues for a Gaussian fixed point [11]. The Gaussian picture is formulated entirely in terms of paramagnons—the long-wavelength fluctuations of the magnetic order parameter. The critical theory is the ϕ^4 -theory, describing the non-linear couplings of the paramagnons. Other degrees of freedom, including fermions, are considered to be bystanders; the primary effect of fermions is to cause a Landau damping, making the dynamic exponent, z , larger than 1. In the antiferromagnetic case, the damping is linear in frequency, and $z = 2$. For either three or two spatial dimensions (d) the effective dimension, $d_{eff} = d + z$, is larger than or equal to 4, the upper critical dimension of the ϕ^4 -theory. The fixed point is therefore Gaussian. As a result, the dynamical spin susceptibility would have to have the mean-field form

$$\chi^{Gaussian}(\mathbf{q}, \omega) \sim \frac{1}{(\mathbf{q} - \mathbf{Q})^2 - i\omega} \quad (1)$$

where \mathbf{Q} is the antiferromagnetic ordering wavevector.

The search for non-Gaussian quantum critical metals has proceeded along a number of directions [12–15]. Here, I describe in some detail the work on the local QCP [12, 16–18], which can confront the existing experiments.

2. Model and microscopic approach

We focus on the Kondo lattice Hamiltonian,

$$H = \sum_{ij,\sigma} t_{ij} c_{i\sigma}^\dagger c_{j\sigma} + \sum_i J_K \mathbf{S}_i \cdot \mathbf{s}_{c,i} + \frac{1}{2} \sum_{ij} I_{ij} \mathbf{S}_i \cdot \mathbf{S}_j. \quad (2)$$

A lattice of spin- $\frac{1}{2}$ local moments (\mathbf{S}_i) and a conduction electron band ($c_{i\sigma}$) are coupled through an antiferromagnetic Kondo exchange interaction (J_K) and an RKKY interaction (I_{ij}). The number of conduction electrons per unit cell, x , is taken to be close to but (without loss of generality) less than 1; all the phases are metallic. Two limits of this model are well understood [19, 20]. When the RKKY interaction is negligible, the local moments are expected to be completely screened by the spins of the conduction electrons. The resulting Kondo resonances turn the local moments into a part of the electronic excitations below some energy scale E_{loc}^* (figure 1). In the opposite limit, the dominating RKKY interactions lead to an antiferromagnetic metal.

To treat the dynamical competition between the RKKY and Kondo interactions, we have applied an extended dynamical mean-field theory (EDMFT) [21, 22]. The key quantities are the usual electron self-energy, $\Sigma(\omega)$, and a ‘spin self-energy’, $M(\omega)$, which enters the dynamical

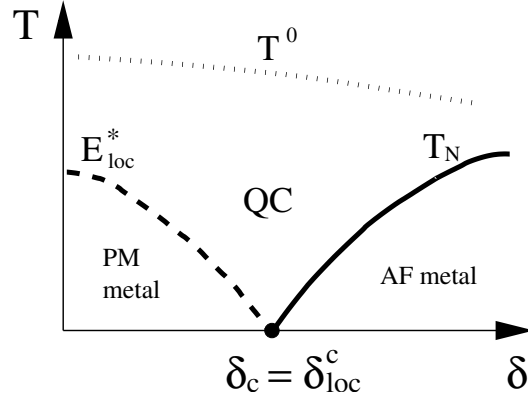


Figure 1. Local QCP. The RKKY interaction $I \equiv T_K^0 \delta$ is tuned as the bare Kondo scale T_K^0 is kept fixed. The local susceptibility is Pauli below E_{loc}^* , Curie above T^0 , and logarithmic (cf equation (5)) in the quantum critical (QC) regime.

spin susceptibility as follows [21]

$$\chi(\mathbf{q}, \omega) = \frac{1}{I_q + M(\omega)} \quad (3)$$

where I_q is the spatial Fourier transform of I_{ij} . The key advantage of the approach is that here spin damping is no longer assumed to be due to a decay into quasiparticle–quasihole pairs. (Such an assumption is inherent in the paramagnon approach, and is responsible for a linear ω -dependence for $M(\omega)$ —cf equation (1).) The approach sets out to also determine whether the fermionic excitations at the QCP retain the heavy-quasiparticle character. Within EDMFT, the lattice model is studied through a self-consistent impurity model, the Bose–Fermi Kondo model:

$$H_{imp} = J_K \mathbf{S} \cdot \mathbf{s}_c + \sum_{p,\sigma} E_p c_{p\sigma}^\dagger c_{p\sigma} + g \mathbf{S} \cdot \sum_p (\phi_p + \phi_{-p}^\dagger) + \sum_p w_p \phi_p^\dagger \cdot \phi_p \quad (4)$$

where g , E_p , and w_p are determined self-consistently [12], and ϕ_p describes a fluctuating magnetic field.

3. Local quantum critical point

We find two types of QCP [12]. The more exotic type is the LQCP, as illustrated in figure 1. Here, the local energy scale, E_{loc}^* , vanishes at the QCP. The local Kondo physics is itself critical, and this criticality is embedded in the criticality (i.e. an infinite spatial correlation length) associated with the magnetic ordering transition.

Corresponding to the vanishing E_{loc}^* is a divergent local (i.e., the \mathbf{q} -averaged) susceptibility. The specific form of the divergence is logarithmic:

$$\chi_{loc}(\omega) = \frac{1}{2\Lambda} \ln \frac{\Lambda}{-i\omega} \quad (5)$$

where $\Lambda \approx T_K^0$. The spin self-energy is

$$M(\omega) \approx -I_Q + A(-i\omega)^\alpha. \quad (6)$$

Here, I_Q is the value of I_q at the ordering wavevector $q = Q$, and the exponent is given by

$$\alpha = \frac{1}{2\rho_I(I_Q)\Lambda} \quad (7)$$

where $\rho_I(I_Q)$ is the ‘RKKY density of states’, $\rho_I(\epsilon) \equiv \sum_q \delta(\epsilon - I_q)$ at $\epsilon = I_Q$.

Viewed from the effective local Kondo model, equation (4), the vanishing E_{loc}^* corresponds to placing this local problem on its critical manifold (a separatrix in the J_K - g parameter space). Indeed, the LQCP was first found [12] using an $\epsilon \equiv 1 - \gamma$ expansion [23, 24] for equation (4), along with the self-consistency conditions. Here γ is the exponent that characterizes the spectrum of the fluctuating magnetic field: $\sum_p [\delta(\omega - w_p) - \delta(\omega + w_p)] \sim |\omega|^\gamma \text{sgn } \omega$. The effects of spin anisotropy (XY and Ising) have been treated in a similar fashion [17, 18]. More recently, numerical studies have been carried out [16] for the EDMFT equations in the anisotropic Kondo lattice model, using a quantum Monte Carlo algorithm originally developed by Grepel and Rozenberg [25]. The numerical results are consistent with the logarithmic form for the singular local susceptibility at the LQCP (cf equation (5)). The numerical value for the exponent α is about 0.7, close to what is seen experimentally for $\text{CeCu}_{6-y}\text{Au}_y$.

Since the peak susceptibility, $\chi(Q, \omega)$, is divergent at the QCP, the basic condition for realizing a LQCP is such that the q -averaged susceptibility diverges at the same point where the peak susceptibility does. Two-dimensional magnetic fluctuations satisfy this condition. If the magnetic fluctuations are purely three dimensional, and if there is no frustration, then E_{loc}^* would be finite at the QCP corresponding to a crossover scale towards the eventual Gaussian behaviour [12, 26]. We also note that our analysis applies provided that the $T = 0$ transition is continuous. The latter can be explicitly checked by studying the EDMFT equations on the ordered side (in the presence of a self-consistent static field); work along this direction is in progress.

4. Robustness of the LQCP

On the basis of Ginzburg–Landau considerations [12], we have also argued that the LQCP is robust beyond the microscopic EDMFT provided that $\alpha < 1$. The key issue is whether the local susceptibility at the QCP remains divergent when we allow a q -dependence in the self-energies. Writing the general scaling form for the static spin susceptibility for q in the vicinity of the ordering wavevector Q :

$$\chi(q) \sim \frac{1}{(q - Q)^{2-\eta}}, \quad (8)$$

the question becomes equivalent to whether the spatial anomalous dimension η remains equal to zero: if it is, then the corresponding local susceptibility in two dimensions remains singular. For $\alpha < 1$, the non-linear couplings among the long-wavelength modes are irrelevant; their contributions to the spin self-energy will contain a q -dependence that is at most $(q - Q)^2$. This, coupled with the fact that the contributions to the spin self-energy from the local modes are expected to be smooth in q , leads to the conclusion that $\eta = 0$. The LQCP is therefore internally consistent.

To reiterate, the tuning to the QC regime provides a robust mechanism for a singular local susceptibility, which in turn places the local (Kondo) fluctuations exactly at its own criticality.

5. Quantum critical dynamics, Fermi surface properties, and experiments

We now turn to experimentally testable properties:

- The dynamical spin susceptibility is

$$\chi(\mathbf{q}, \omega) = \frac{1}{(I_q - I_Q) + A(-i\omega)^\alpha W(\omega/T)}. \quad (9)$$

- The static uniform spin susceptibility has a modified Curie–Weiss form:

$$\chi(T) = \frac{1}{\Theta + BT^\alpha} \quad (10)$$

with exactly the same exponent as in equation (9).

- The NMR relaxation rate contains a temperature-independent component:

$$\frac{1}{T_1} \sim A_{hf}^2 \frac{\pi}{8\Lambda}. \quad (11)$$

- The Fermi surface changes sharply at the QCP, from ‘large’ (volume $(1+x)$) to ‘small’ (volume x and a different topology) as the system orders.

Equation (9) reproduces the form observed [9] in the inelastic neutron scattering experiments on $\text{CeCu}_{6-y}\text{Au}_y$. In addition, the neutron results are consistent with two-dimensional magnetic fluctuations [10].

Recently, NMR experiments have been carried out [27] on YbRh_2Si_2 . The relaxation rate $1/T_1$ is strongly dependent on the magnetic field, in a way that appears consistent with B/T scaling. Over the temperature range where the specific heat is logarithmic, $(1/T_1)_{B \rightarrow 0}$ does contain a constant component.

Even more recently, NQR experiments have been carried out [37] at a Cu site in $\text{CeCu}_{6-y}\text{Au}_y$. The relaxation rate has a non-Korringa temperature dependence; at low temperatures $1/T_1 \sim T^\beta$, where the exponent $\beta \approx 0.75$ is very close to the fractional exponent α seen in the \mathbf{q} -dependent dynamical spin susceptibility [9]. This result would be consistent with the neutron scattering result if the hyperfine couplings between the Cu nuclei and the f -electron spins at the Ce sites were such that the dominant contributions to $1/T_1$ came from generic wavevectors (wavevectors far away from the peak wavevectors). With this assumption about the hyperfine coupling, the Cu-site NQR experiment confirms the existence of the fractional exponent over an extended region of the Brillouin zone.

In addition to arising for $\text{CeCu}_{6-y}\text{Au}_y$, the modified Curie–Weiss form for the uniform spin susceptibility, equation (10), has also been seen [5] for YbRh_2Si_2 .

The Fermi surface reconstruction can be probed through de Haas–van Alphen experiments. We are aware of one case, CeRh_2Si_2 (the quantum critical behaviour of which is not yet as well characterized as for the other heavy fermions), for which such measurements do reveal a Fermi surface reconstruction [28]. A less direct experimental signature is that the Hall coefficient should jump as the system is tuned through the QCP [12, 29]; some preliminary indication of such a behaviour has been found [30] in YbRh_2Si_2 .

We make two remarks in passing. First, similar features in the dynamics (ω/T scaling) [31, 32] and other properties [33, 34] occur for $\text{UCu}_{5-x}\text{Pd}_x$, raising the possibility that a local criticality is also operating in these (strongly disordered and frustrated) systems. Second, we have focused on the quantum critical physics associated with a transition between paramagnetic and antiferromagnetic metals. Other phases, such as spin liquids [35, 36], may also be relevant [14].

6. Concluding remarks

We have identified a local quantum critical metal, which is described on the basis of a non-Gaussian fixed point. This picture provides a natural explanation for some most unusual experiments on heavy-fermion metals in the vicinity of a magnetic QCP.

The local QCP serves as a concrete example where fermions, instead of being bystanders, directly participate in the critical behaviour. The Kondo resonances, which have the quantum numbers of an electron and would turn the local moments into a part of the electron fluid, become critical at the same point where a magnetic ordering sets in.

More generally, the local moment physics in Kondo systems is analogous to the Mott phenomenon. The strong Coulomb interactions lead to a microscopic Coulomb blockade or, equivalently, a projection onto a restricted Hilbert space. Such effects are assumed to be inconsequential in the Gaussian quantum critical metal picture. On the other hand, and reminiscent of what happens in the usual Mott transition, they play a central role for a local quantum critical metal.

Acknowledgments

I would like to thank D Grempel, K Ingersent, S Rabello, J L Smith, and L Zhu for collaborations, many colleagues—particularly P Coleman, J Custers, J Flouquet, K Ishida, H von Löhneysen, G Lonzarich, Y Ōnuki, S Paschen, C Pépin, A Rosch, S Sachdev, F Steglich and R E Walstedt—for discussions, and the NSF (grant No DMR-0090071), TcSAM, and the Welch foundation for support.

References

- [1] Panagopoulos C *et al* 2003 *Solid State Commun.* **126** 47 and references therein (Panagopoulos C *et al* 2002 *Preprint* cond-mat/0210363) and references therein Tallon J L *et al* 1999 *Phys. Status Solidi b* **215** 531
- [2] von Löhneysen H *et al* 1994 *Phys. Rev. Lett.* **72** 3262
von Löhneysen H 1996 *J. Phys.: Condens. Matter* **8** 9689
- [3] Trovarelli O *et al* 2000 *Phys. Rev. Lett.* **85** 626
- [4] Mathur N D *et al* 1998 *Nature* **394** 39
- [5] Steglich F *et al* *Physica B* at press
- [6] Gegenwart P *et al* 2002 *Phys. Rev. Lett.* **89** 056402
- [7] Grosche F M *et al* 2001 *J. Phys.: Condens. Matter* **13** 2845
- [8] Demuer A *et al* 2001 *J. Phys.: Condens. Matter* **13** 9335
Knebel G *et al* 2002 *Phys. Rev. B* **65** 024425
- [9] Schröder A *et al* 2000 *Nature* **407** 351
- [10] Stockert O *et al* 1998 *Phys. Rev. Lett.* **80** 5627
- [11] For a review, see
Sachdev S 1999 *Quantum Phase Transitions* (Cambridge: Cambridge University Press) ch 12
- [12] Si Q, Rabello S, Ingersent K and Smith J L 2001 *Nature* **413** 804
Si Q, Rabello S, Ingersent K and Smith J L 2002 *Preprint* cond-mat/0202414
- [13] Coleman P *et al* 2000 *Phys. Rev. B* **62** 3852
- [14] Sachdev S and Morinari T 2002 *Phys. Rev. B* **66** 235117
- [15] Abanov A and Chubukov A 2000 *Phys. Rev. Lett.* **84** 5608
- [16] Grempel D and Si Q 2002 *Preprint* cond-mat/0207493
- [17] Zhu L and Si Q 2002 *Phys. Rev. B* **66** 024426
- [18] Zaránd G and Demler E 2002 *Phys. Rev. B* **66** 024427
- [19] Doniach S 1977 *Physica B* **91** 231
- [20] Varma C M 1976 *Rev. Mod. Phys.* **48** 219
- [21] Si Q and Smith J L 1996 *Phys. Rev. Lett.* **77** 3391
Smith J L and Si Q 2000 *Phys. Rev. B* **61** 5184
- [22] Chitra R and Kotliar G 2000 *Phys. Rev. Lett.* **84** 3678
- [23] Smith J L and Si Q 1999 *Europhys. Lett.* **45** 228
- [24] Sengupta A M 2000 *Phys. Rev. B* **61** 4041
- [25] Grempel D and Rozenberg M 1999 *Phys. Rev. B* **60** 4702
- [26] Burdin S *et al* 2002 *Phys. Rev. B* **66** 045111

-
- [27] Ishida K *et al* 2002 *Phys. Rev. Lett.* **89** 107202
Ishida K *et al* 2002 private communications
 - [28] Araki S *et al* 2001 *Phys. Rev. B* **64** 224417
 - [29] Coleman P *et al* 2001 *J. Phys.: Condens. Matter* **13** R723
 - [30] Paschen S *et al* 2003 *Acta Phys. Pol. B* **34** 359
 - [31] Aronson M C *et al* 1995 *Phys. Rev. Lett.* **75** 725
 - [32] MacLaughlin D E *et al* 2001 *Phys. Rev. Lett.* **87** 066402
 - [33] Maple M B *et al* 1994 *J. Low Temp. Phys.* **95** 225
 - [34] Stewart G R 2001 *Rev. Mod. Phys.* **73** 797
 - [35] Sachdev S and Ye J 1993 *Phys. Rev. Lett.* **70** 3339
 - [36] Parcollet O and Georges A 1999 *Phys. Rev. B* **59** 5341
 - [37] Walstedt R E, Kojima H, Butch N and Bernhoeft N 2003 *Phys. Rev. Lett.* **90** 067601